



DEPARTMENT OF  
HOMELESSNESS AND  
SUPPORTIVE HOUSING

# Department of Homelessness & Supportive Housing



# Homelessness In San Francisco

2



Adults

On any given night:  
6,500 adults experience  
homelessness

3,500 people unsheltered

Over 14,000 people access  
services each year



Children

1 in 30 public school  
students are homeless



Families

On any given night 630  
people in families  
experience homelessness



Youth

On any given night 853  
youth experience  
homelessness on any given  
night

<http://dhsh.sfgov.org>



# Homeless Services in SF

3



San Francisco has 1,400 shelter beds with over 1,000 people on the waitlist.



San Francisco has the highest number of supportive housing units per capita for homeless people in the USA (6,500) but only 800 units become available each year.



Rapid Re-Housing Subsidies

<http://dhsh.sfgov.org>



# Causes of Homelessness

4

## Federal Policy

- HUD budget has been cut by nearly 80% (in real dollars) since 1978
- Cost of the mortgage interest tax deduction is nearly \$75 billion

## State Policy

- Inconsistent funding for affordable housing
- Costa Hawkins and Ellis Acts limit ability to regulate rental market
- Prop 13 and other laws limit the ability to raise local revenue



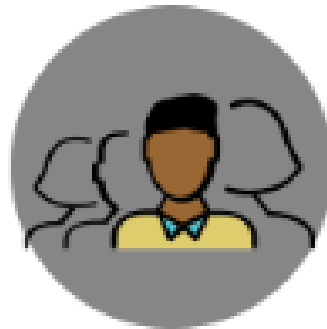
# Successes: Housing Placements Since 2011

5



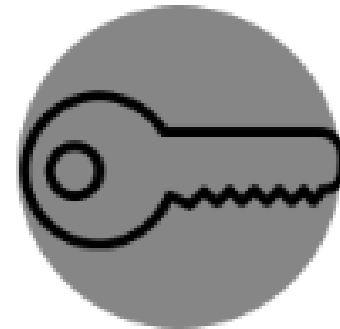
**5,032**

Supportive Housing  
Placements



**5,096**

Reconnected with  
Family & Friends Via  
Homeward Bound



**857**

Rapid Re-Housing  
Placements

<http://dhsh.sfgov.org>



# Innovations in Ending Homelessness

6

Since the formation of the Department of Homelessness & Supportive Housing in summer 2016 progress has been made in key priority areas.

Encampment  
Resolution

Expanding  
Navigation  
Centers

Expanding  
Housing Options

Strategic  
Planning &  
Systems Change

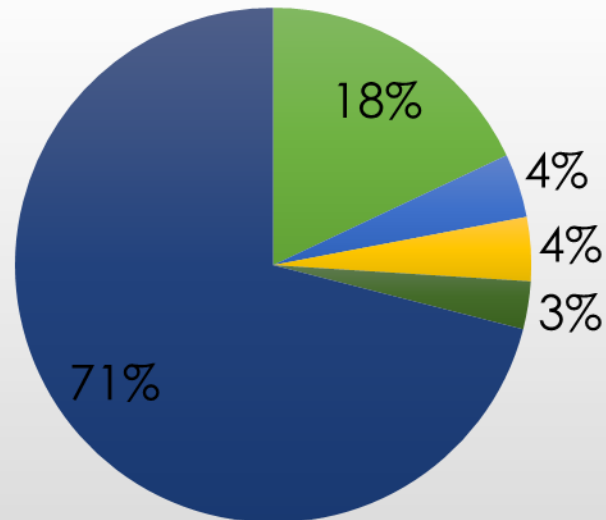
<http://dhsh.sfgov.org>



# FY2016-2017 HSH Budget

7

**FY 16-17 Budget = \$209M**  
**Program Spending**



- Shelters/Navigation Centers
- Resource Centers/Services
- Outreach
- Transitional Housing
- Housing/Subsidies

<http://dhsh.sfgov.org>



# Encampment Resolution Team

8

- Prioritize the health and safety of people living in encampments and neighborhoods
- Connect people with shelter and services
- Multi-departmental collaboration
- Re-encampment prevention team launched



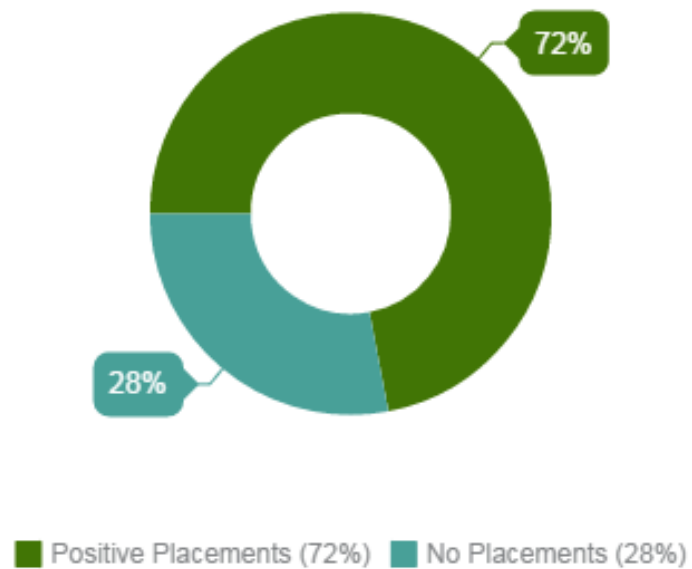




# Encampment Resolution Team

9

Placements Out of Encapments





# Navigation Center

10

- Low-threshold shelter alternatives
- Target people leaving encampments & people with the longest experiences of homelessness
- Co-location of services
- Focus on navigating people to long-term solutions





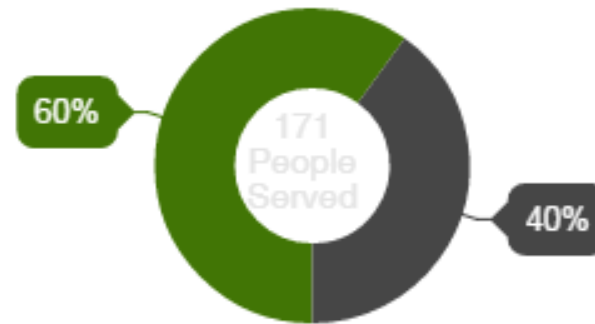
# Navigation Center

### Mission Navigation Center Outcomes



■ Positive Placement (79%) ■ Negative Exits (21%)

### Civic Center Navigation Center Outcomes



■ Positive Placements (60%) ■ Negative Exits (40%)



# Expanding Housing Opportunities

12

## **Permanent Supportive Housing (PSH)**

- Approximately 6,500 units for chronically homeless adults and families
- PHS should be utilized for people with the longest histories of homelessness and most complex needs

## **New Housing**

- 154 units for chronically homeless adults and veterans opened in Fall 2016

## **Coming Soon!**

- 168 units for chronically homeless adults and veterans in Spring & Summer 2017



# Expanding Housing Opportunities

13

## Moving On Initiative

- 350 Housing Choice Vouchers available for formerly homeless adults & families

## Rapid Re-Housing

- Short-term rental assistance for families
- Connecting families with private market housing + support services





# Strategy & Systems Change

14

HSH is developing a strategic framework to address homelessness by population



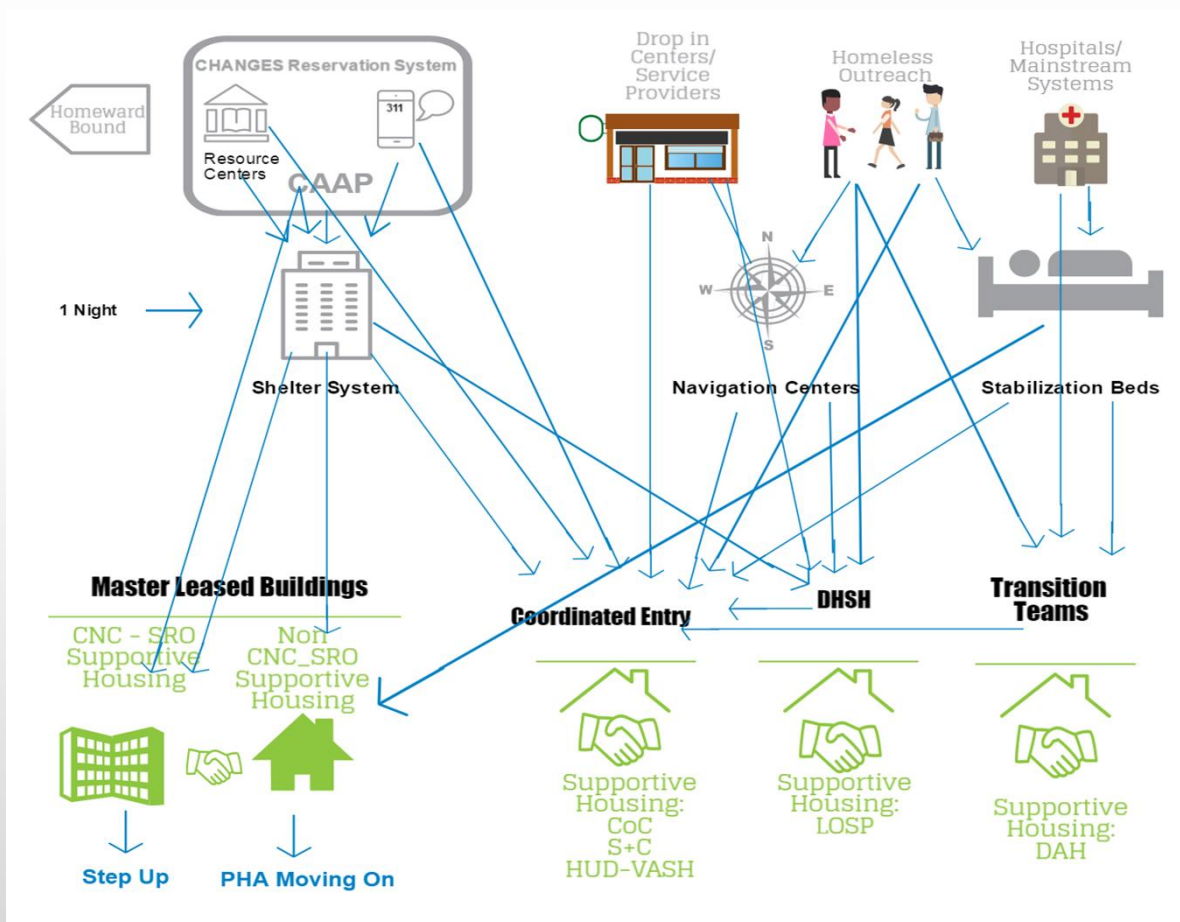
The strategic framework will be completed in Spring of 2017



<http://dhsh.sfgov.org>



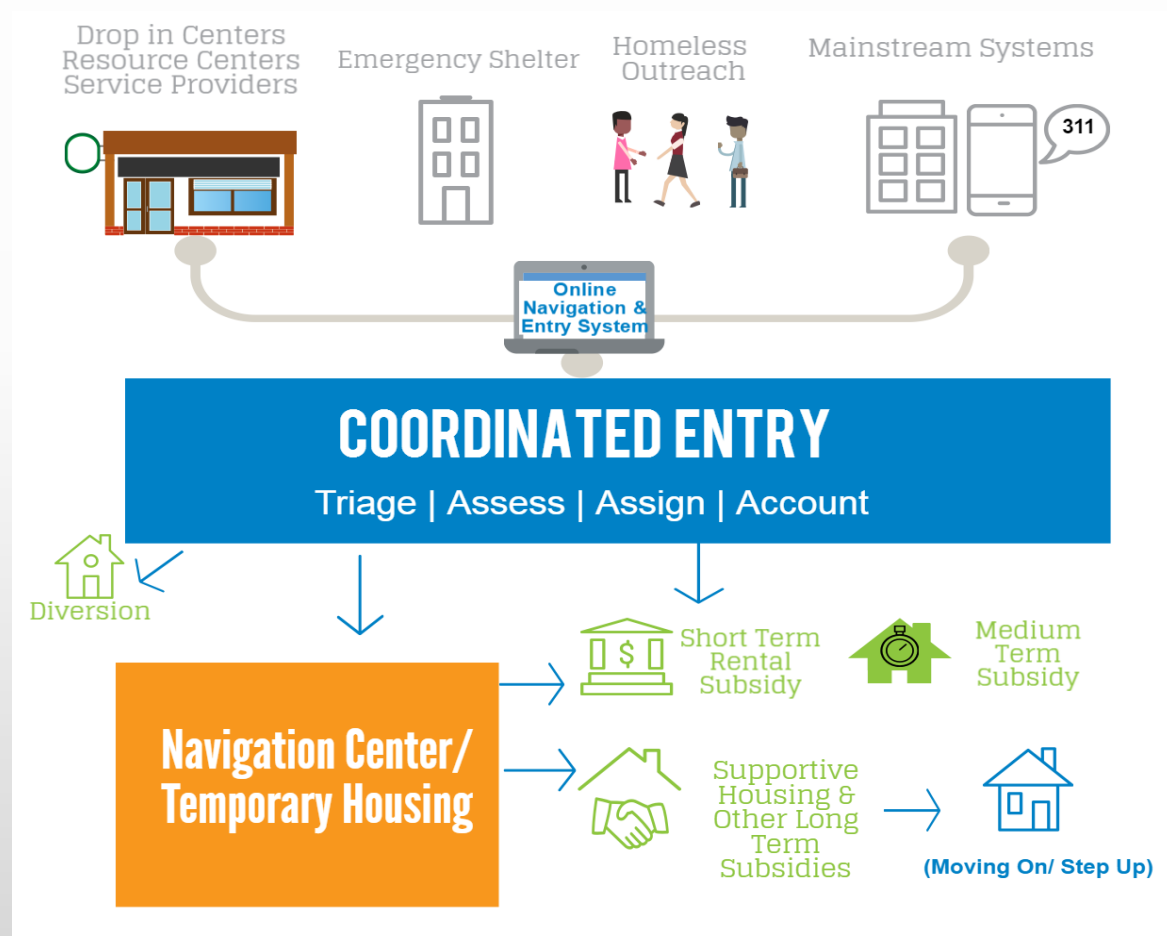
# Current System





# Coordinated Entry: A system-wide strategy for prioritizing people for housing and services based on need

16







# How Can You Help?

17

- Common Sense
- Generosity
- Compassion

