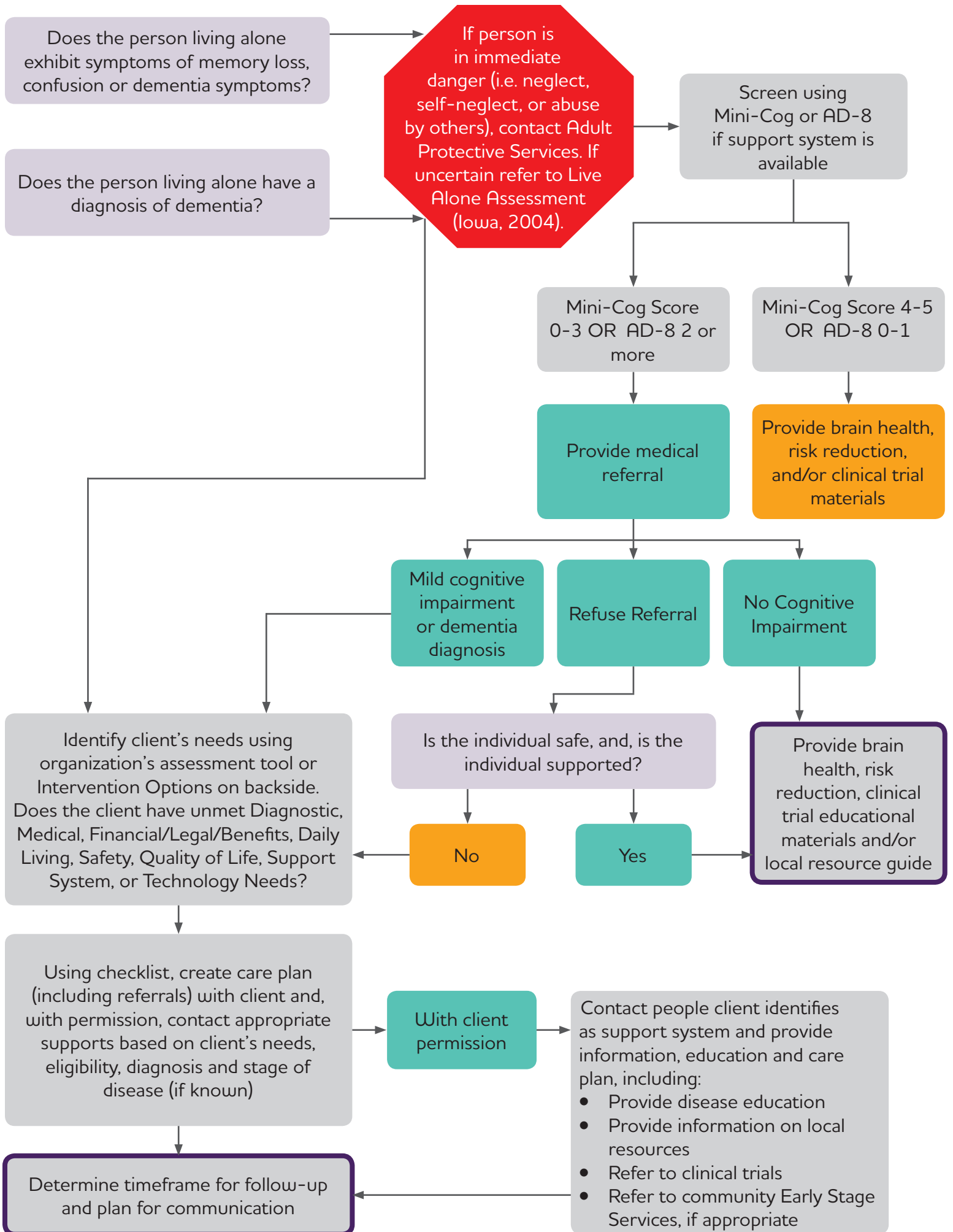


# Live Alone Dementia Safety Net Algorithm

The definition of living alone may include individuals who live with another person; however, 1.) the person provides no caregiving support, or 2.) the caregiving support is inadequate.



Note: At any point in the process a client may decline further contact. In these instances, refer to APS as appropriate and per state law.

## DIAGNOSTIC REFERRALS FOR POSITIVE SCREEN OR DIAGNOSTIC UNCERTAINTY

### Refer to Primary Care Provider (or Specialist as Needed)

- Neurologist
- Neuropsychologist
- Geriatric Psychiatrist
- Geriatrician
- Memory Disorders Clinic

## ADDITIONAL MEDICAL NEEDS

- Mental Health Services
- Prescription Insurance and/or Assistance programs
- Vision, Hearing, Dental, Podiatry
- Holistic/Complimentary Medicine
- Trialmatch/clinical trials
- Home Health
- Durable Medical Equipment
- Adult Day Health
- Patient Advocacy and/or translation services

## LEGAL, FINANCIAL & BENEFITS

### Legal

- Encourage client to assign durable power of attorney and complete healthcare directives and POLST. Refer to legal assistance programs, elder law attorney, public guardian/conservator as needed.

### Financial

- Day to day money management
- Refer to fiduciary program
- Refer to Representative Payee Program through Social Security

### Benefits

- Social Security/SSDI/SSI
- Veterans Administration (VA)
- Health Insurance – Medicare, Medi-Cal (Medicaid)
- PACE
- IHSS – In-home Supportive Services (Medi-Cal)
- Case Management – MSSP, Linkages, VA, Alzheimer's Association, private
- SNAP – Senior Nutrition Assistance Program

## DAILY LIVING & FUNCTIONS

- **Personal Care:** In-home care assistance (Long-term care insurance, VA, In-home Support Services, or private pay)
- **Shopping** – grocery delivery
- **Meals** – Meals on Wheels, congregate meals, private meal delivery
- **Assistive Technology** – Telephone Assistance Programs, Independent Living Centers
- **Chores** – In-home Support Services, private pay, volunteer programs

## SAFETY

*Note: In situations where client is in immediate danger by self-neglect or by neglect or abuse from others, contact Adult Protective Services.*

### Driving

- Counsel on risks
- Refer for driving evaluation
- DMV Unsafe Driver Form
- Transportation resources: Paratransit services, private hire, volunteer transportation programs
- Taxi vouchers/scrip

### Medication Management

- Oversight by a health care professional.
- Automated/electronic Medi-set
- Pharmacy blister or bubble pack

### Wandering

- Medic Alert+Safe Return, Found, or Project Lifesaver
- GPS tracking systems

### Home Safety

- Home safety evaluation
- Home modification program
- Equipment loan programs
- Stove safety
- Personal Emergency Response Systems
- Activity monitoring systems

## QUALITY OF LIFE & ACTIVITIES

- Community Early Stage Programs and educational material
- Senior Centers (incl virtual programs)
- Adult day services
- Friendly visitor, companion, telephone reassurance programs
- Culturally appropriate resources
- LGBT resources

## CARE CIRCLE DEVELOPMENT & SUPPORT SYSTEM

Identify support (incl: family, friends, neighbors, Religious/Spiritual organizations, Community groups/affiliations, fraternal organizations, social service agencies, cultural organizations, LGBT organizations)

- Obtain consent to contact on behalf of client
- Contact identified individuals
- Convene care circle/support system meeting
- Provide education and referrals

## TECHNOLOGY (ALSO SEE CARE CIRCLE RESOURCE GUIDE)

- Activity tracking & home automation
- Wandering
- Medication management
- Activities of daily living support



Adapted from ACT on Alzheimer's® developed tools and resources. ACT on Alzheimer's® tools and resources cannot be sold in their original or modified/adapted form.

Supported by DHHS, ACL (#90AL0002-01-00)