

Support @ Home

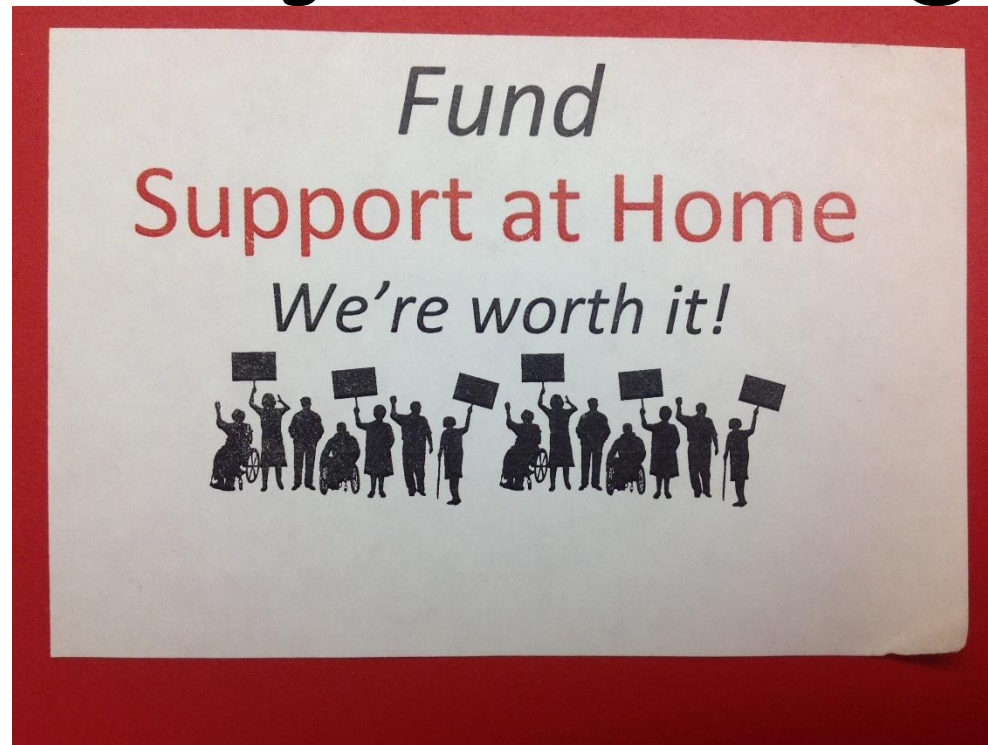
Jeanne Caruso, JD, MFT
Support @ Home Director

Laura Liesem, LCSW
Regional Director, San Francisco
Community Living Services

AGENDA

- Pilot Timelines and Deliverables**
- Eligibility**
- Program Overview**
- Program Evaluation**
- Referrals**
- Opportunities for Involvement**

Advocacy and Background



Mobilizing resources, public opinion, interacting with agencies and championing the rights of society's most vulnerable members. You are frequently the voice for change and social justice!

Pilot Timelines & Deliverables



A home care voucher program serving adults with disabilities and older adults who have unmet home care needs.

May 2017 until April 2019

175-250 clients annually

Eligibility

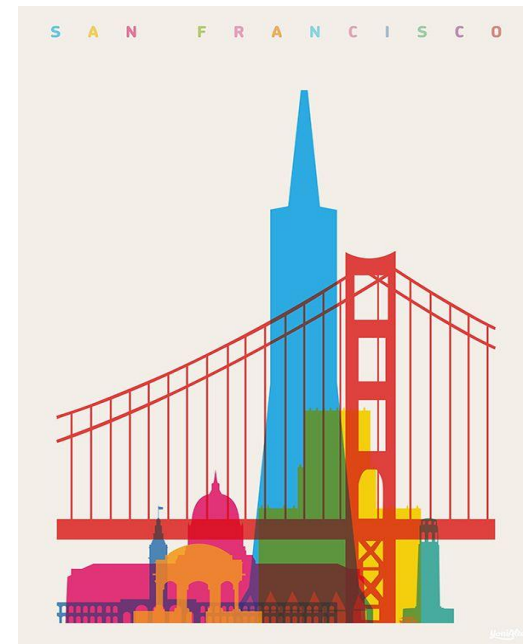
Two
Activities of Daily Living or
Instrumental Activities of
Daily Living



Up to 100% of Area
Medium Income

And

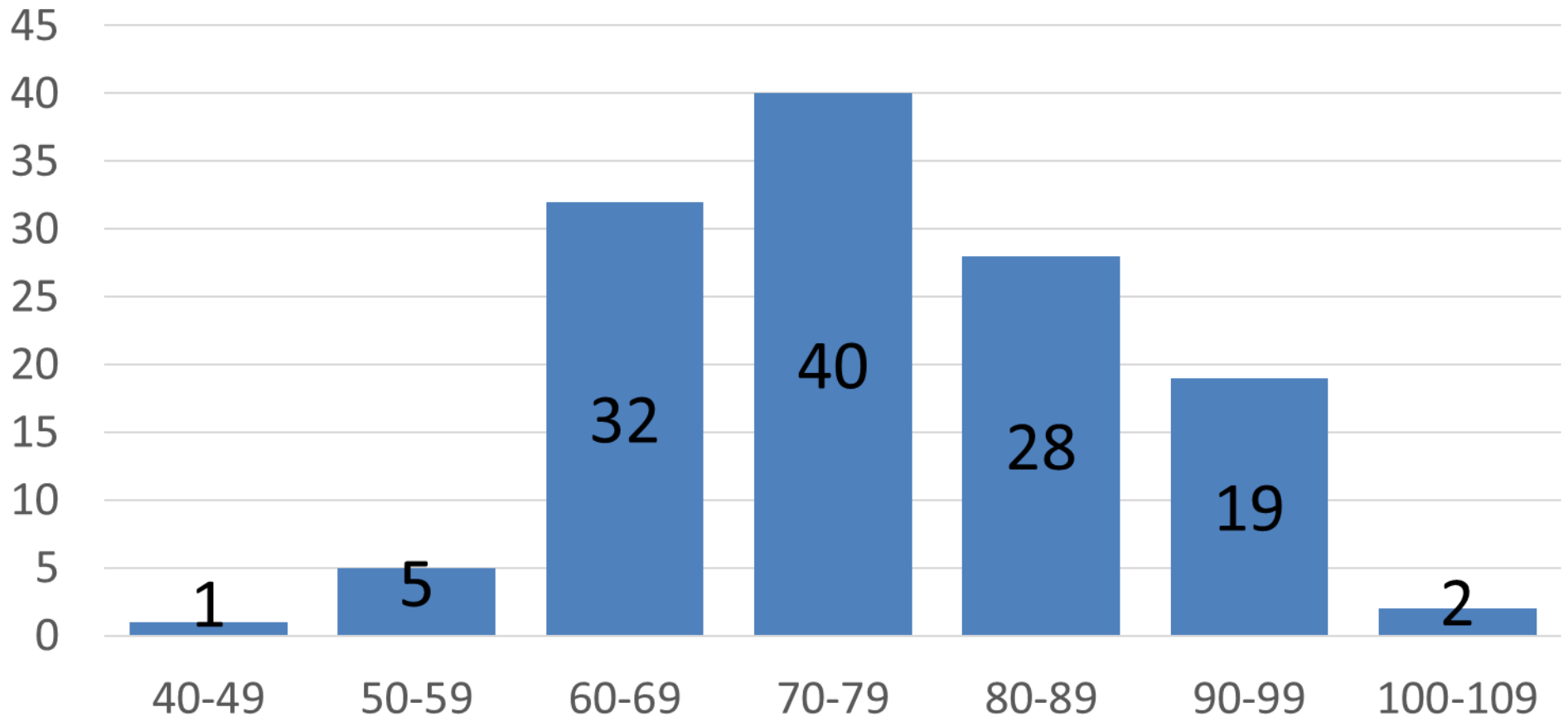
Up to \$40,000 in
Assets



S@H Program Foundation

- **50% Adults with Disabilities (Age 18-59)**
- **50% Seniors (Age 60+)**
- **Client Choice & Client Directed Care**
- **Home Care Provider Wage = \$15/hour**
- **Client Copayment**
- **Orientation for all Clients**
- **Training for all Independent Providers**
- **Monthly Check-Ins & At Least Annual Re-Assessments by S@H**

Age All Referred



Provider Modes

Agency Mode



Independent Provider Mode (payroll service)



Client Copayment

Client Copayment amount is determined by
Financial Needs Assessment

FINANCIAL NEED		
High	Med	Low
20%	33%	50%

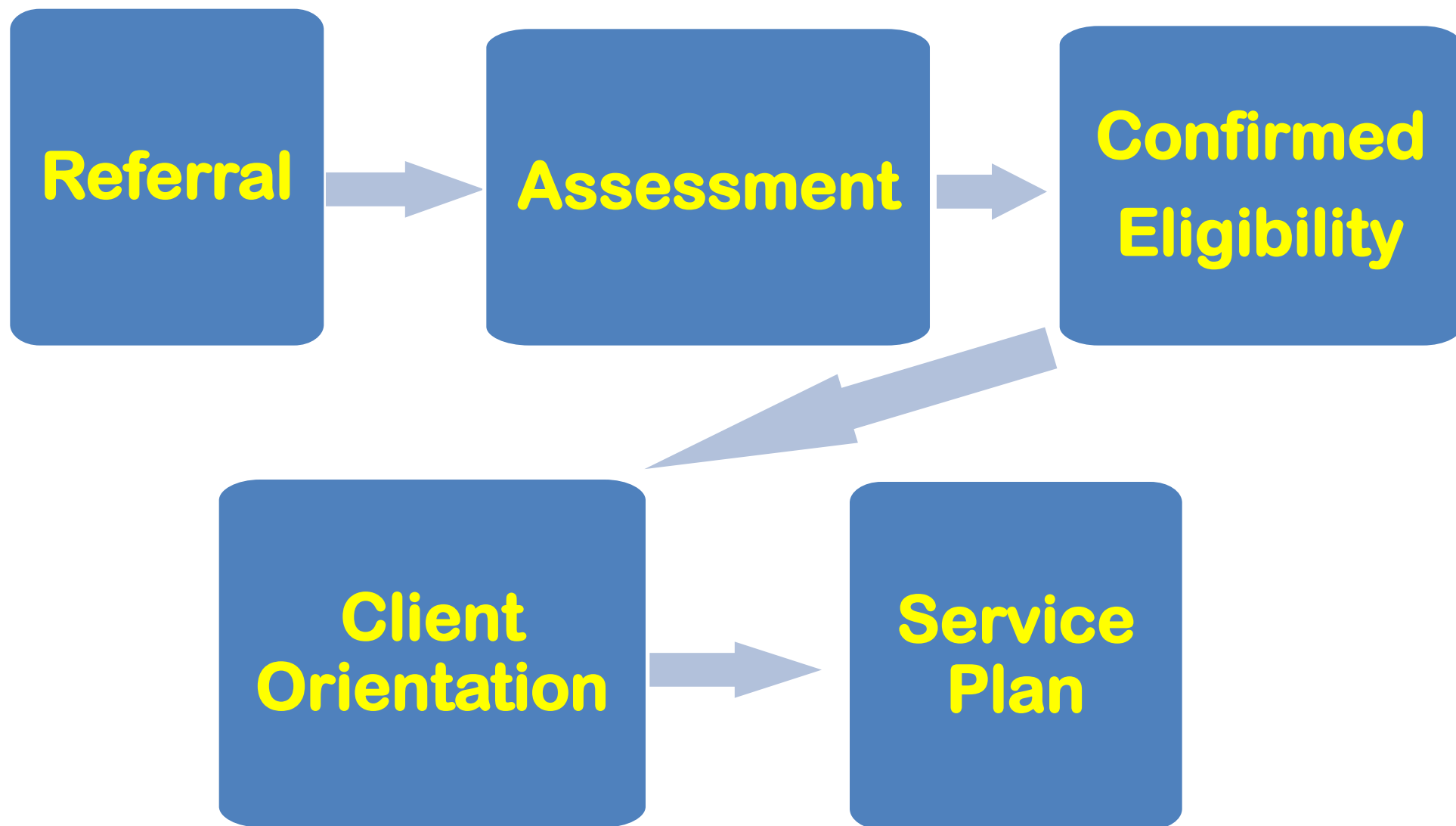
FUNCTIONAL & FINANCIAL NEEDS GRID

FINANCIAL NEED

FUNCTIONAL NEED

	HIGH	MEDIUM	LOW
HIGH	TOTAL VOUCHER AMOUNT 15 hours/week	TOTAL VOUCHER AMOUNT 15 hours/week	TOTAL VOUCHER AMOUNT 15 hours/week
MEDIUM	TOTAL VOUCHER AMOUNT 8 hours/week	TOTAL VOUCHER AMOUNT 8 hours/week	TOTAL VOUCHER AMOUNT 8 hours/week
LOW	TOTAL VOUCHER AMOUNT 4 hours/week	TOTAL VOUCHER AMOUNT 4 hours/week	TOTAL VOUCHER AMOUNT 4 hours/week

Workflow for all care recipients



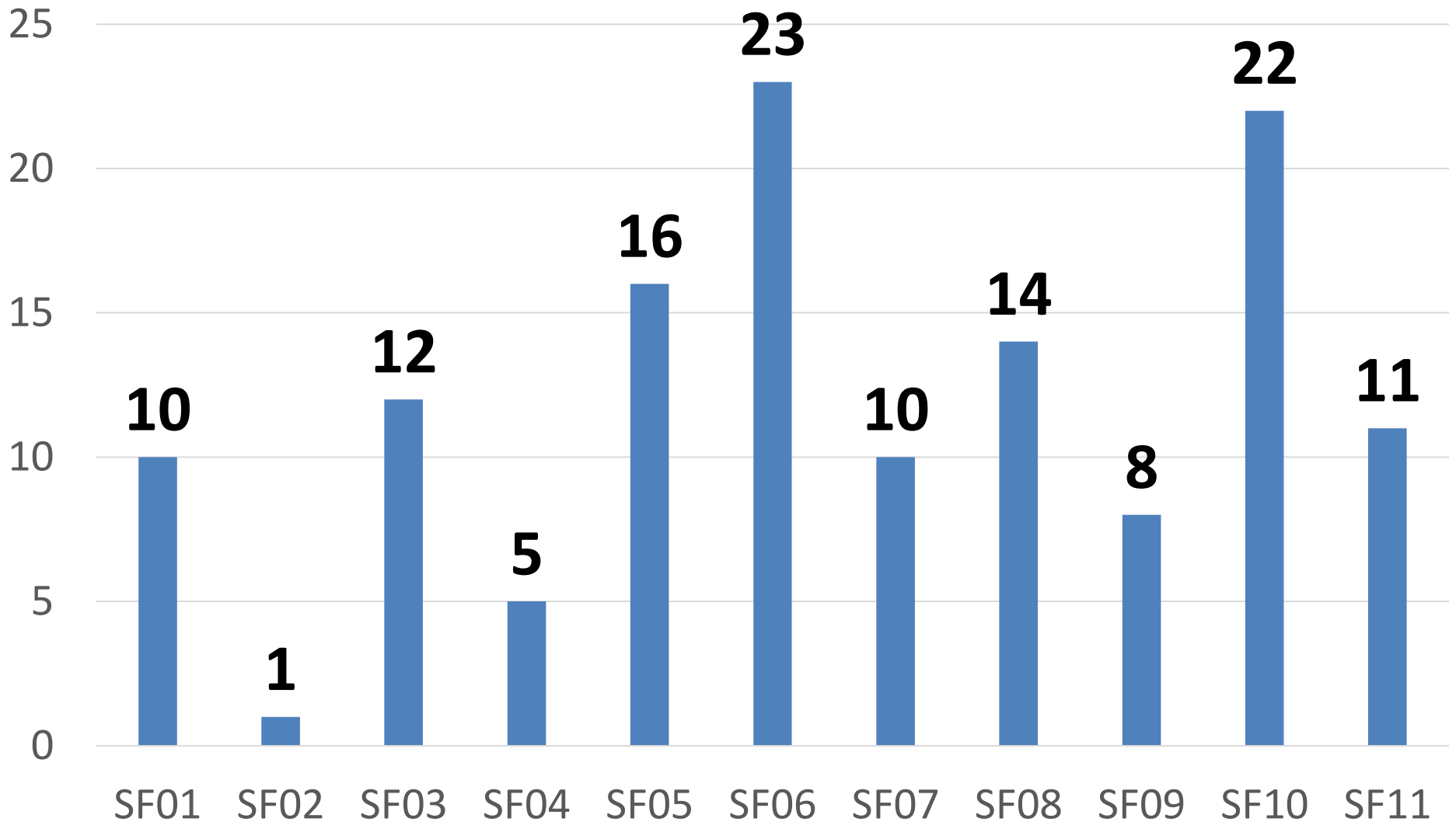
Program Evaluation



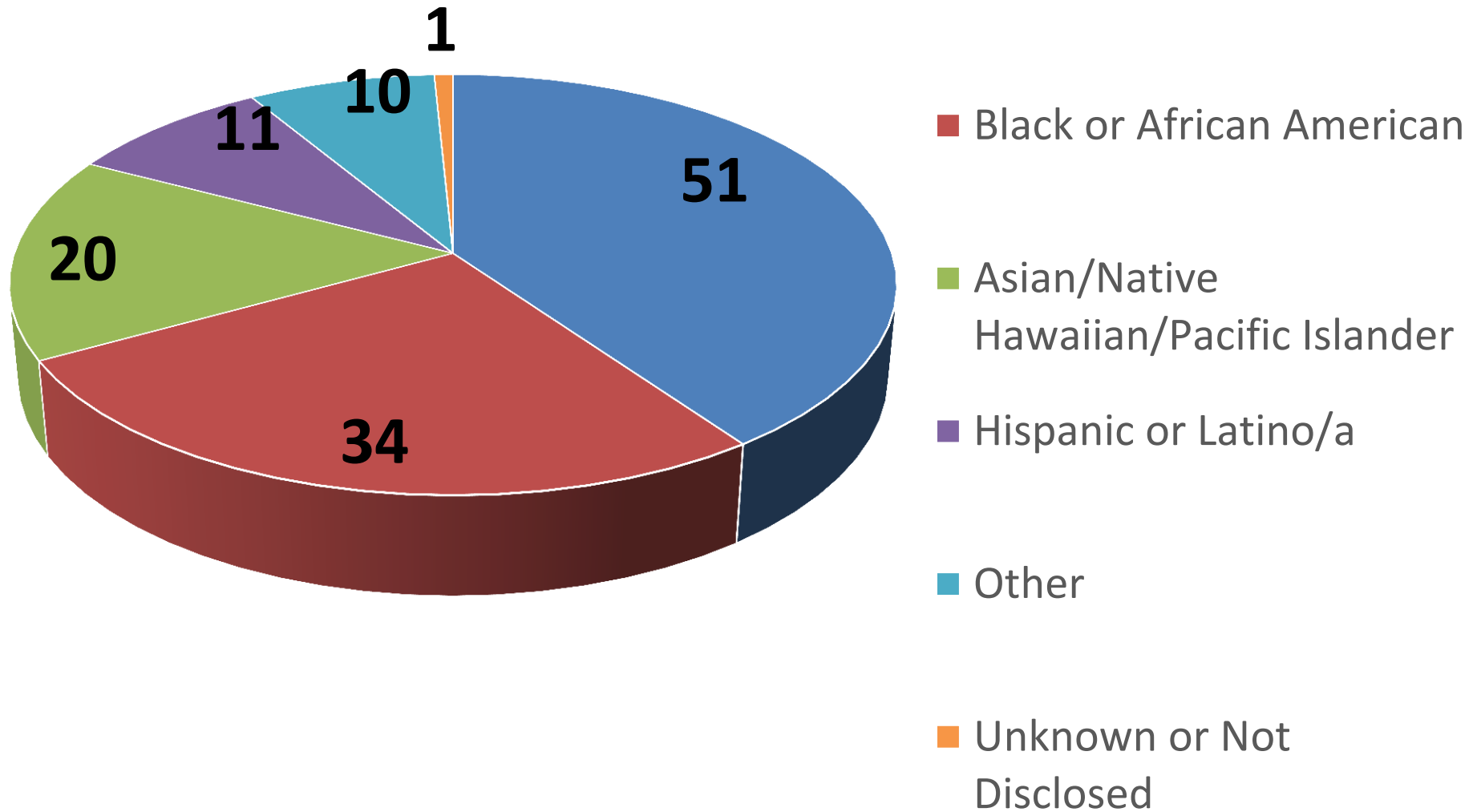
University of California
San Francisco
advancing health worldwide

- **Evaluate the Efficiency and Effectiveness of S@H**
- **Principal Investigator, Joanne Spetz of The Institute of Health Policy Studies**
- **Co-Investigator, Laura Wagner of The Department of Community Health Systems**

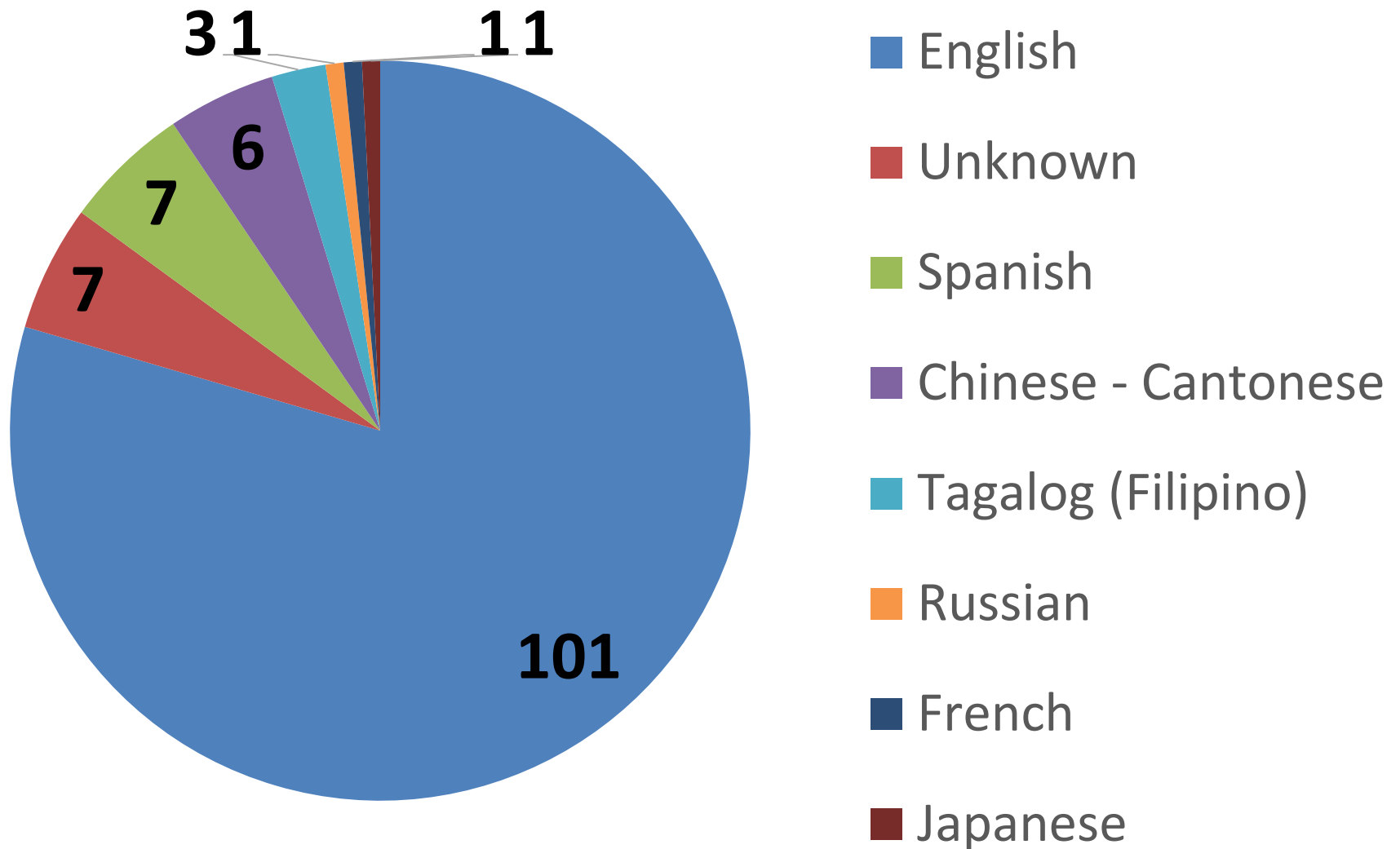
Supervisor District All Referred



Ethnicity All Referred

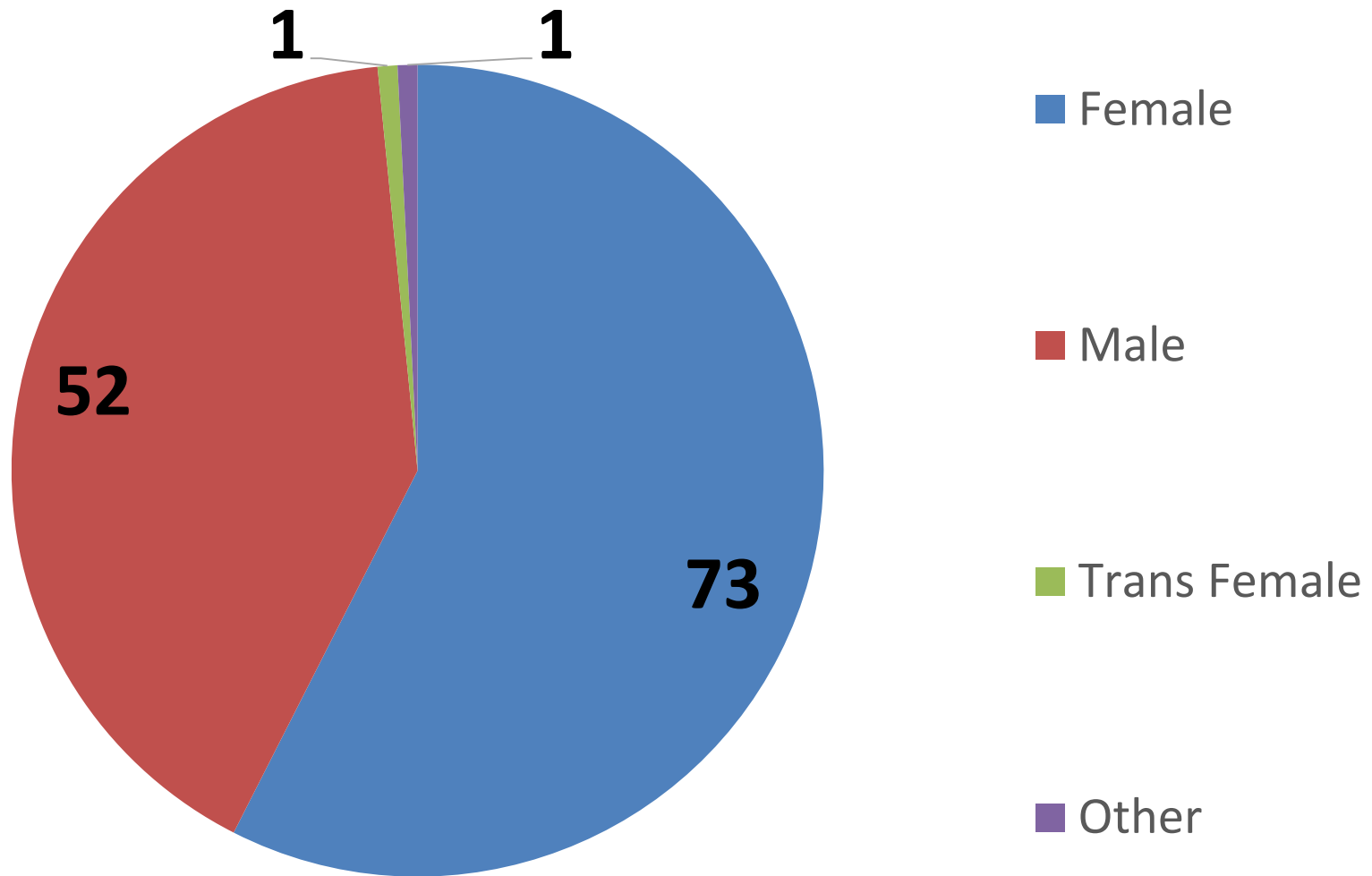


Primary Language All Referred



Gender

All Referred



Referrals

- Call IOA Connect 415.750.4111



- Go to ioaging.org



Opportunities for Involvement



Support @ Home Advisory Committee

An opportunity for consumers and stakeholders to help guide programmatic decision making

Monthly meetings