



PALLIATIVE CARE WORKGROUP

Transforming Care Partners Update

June 7th, 2018

AGENDA

- Status
- Initial Observations
- Next Steps

TIMING & DELIVERABLES

Workstreams	Q2 2018	Q3 2018	Q4 2018	Q1 2019	Q2 2019	Deliverables
A. External Analysis						<ul style="list-style-type: none"> <input type="checkbox"/> Updated Workgroup recommendations for the City of San Francisco <input type="checkbox"/> Updated list of high priority initiatives for the Workgroup
B. Internal Analysis						<ul style="list-style-type: none"> <input type="checkbox"/> Codification of the unique value proposition of the Workgroup <input type="checkbox"/> Learnings and best practices from similar groups <input type="checkbox"/> Criteria to evaluate initiatives for the Workgroup to achieve its vision
C. Initiative Evaluation & Selection						<ul style="list-style-type: none"> • Selection of key initiatives and analysis of financial resources available to support implementation of initiatives
D. Strategy & Implementation Plan						<ul style="list-style-type: none"> • 18 month Implementation Plan, including key initiatives, budget, financial forecast and staffing
E. Initiative Implementation						<ul style="list-style-type: none"> • Initiative oversight including evaluation of progress and changes to the Strategic and Implementation plan based on learnings

STATUS : INTERVIEWS SCHEDULED/COMPLETED

Interviewed 13 People

- Jeff Newman, UCSF
- David Zwicky, Hospice by the Bay
- Kelly Dearman, IHSS Pubic Authority
- Shireen McSpadden SF DAAS
- Melissa Stern and Dr. Heller, Kaiser
- Anne Kinderman, SF General
- Megory Anderson, Sacred Dying Foundation
- George Kellar, Zen Hospice Project
- Rebecca Sudore, UCSF
- Ramona Davies, Open House
- BJ Miller, UCSF
- Rachel Lovett, Thriving in Place
- Christine Ritche, UCSF

Holding 6 More Interviews

- Shoshana Ungerleider, Sutter
- Torrie Fields, Blue Shield
- Redwing Keyssar, Jewish Family and Children's Services
- Anne Hughes, Laguna Hospital
- Terry Hill, Hill Physicians
- Catherine Dodd, SF Health Services System

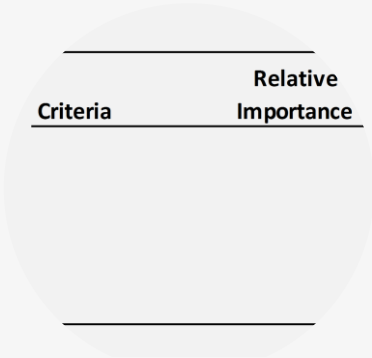
QUESTIONS TRYING TO ANSWER



UNIQUE VALUE



GREATEST
OPPORTUNITY OR
IMPACT



CRITERIA



UNIQUE VALUE

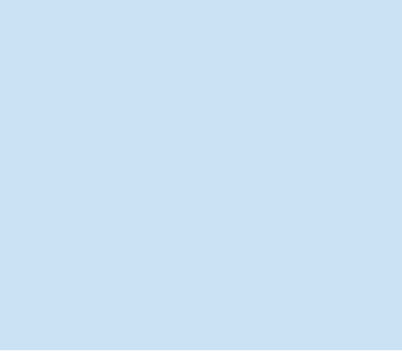
*Initial
Observations*

OBSERVATIONS- UNIQUE VALUE

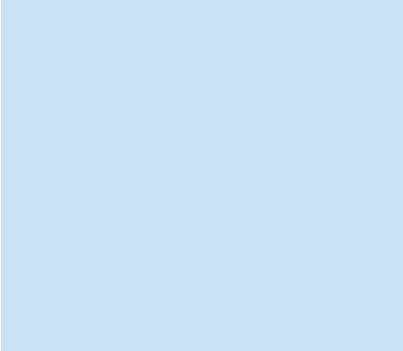
Diverse Stakeholder
Representation



Connections



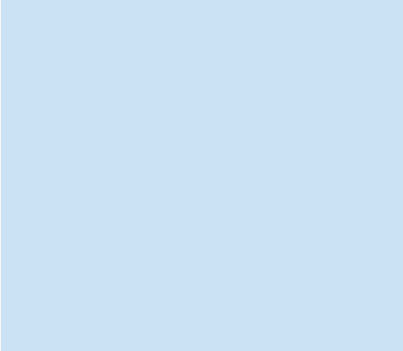
Passion



Diverse & Deep Expertise



Commitment



OBSERVATIONS- GAPS IN STAKEHOLDER REPRESENTATION

STAKEHOLDER GROUP	REPRESENTATION WITH ACTIVE GROUP MEMBERS (20)	REPRESENTATION IN E-MAIL LIST (80)	GAPS
City Leadership	DAAS, Department of Public Health		
Health Systems	UCSF, SFGH, Sutter, VA	Kaiser, Dignity, Chinese Hospital	
Care Team	Geriatricians, Palliative Care Specialists, RN's, Clergy, Hospitalist	Social Worker	Primary Care, Other specialists
Community Based Organizations (CBO's)	Jewish Family & Children's Services, Zen Hospice Project, Sacred Dying, Open House, Bay Area Jewish Healing Center	30 th Street Senior Center, Self Help for the Elderly, Others, Maitri, Shanti, On Lok	
Hospice Providers	Hospice by the Bay	Vitas	
Health Plans	Blue Shield of California	Chinese Community Health Plan	San Francisco Health Plan
Foundations/Funders	Stupksi Foundation		
Skilled Nursing Facilities/ Assisted Living	Laguna Honda	Generations Healthcare	
Professional Societies	San Francisco Medical Society		
Disease Focused Societies	Alzheimer's Association		Cancer Societies, Others TBD
Community Clinics			San Francisco Community Clinic Consortium
Social Services Organizations	Some overlap with CBO's		

RECOMMENDATIONS

INTERVIEW SAN FRANCISCO HEALTH
PLAN COMMUNITY CONSORTIUM CLINIC
TO FIND OUT WHY THEY MIGHT
ENGAGE

ACTIVELY RECRUIT OR RE-ENGAGE
ADDITIONAL MEMBERS ONCE WE HAVE
SELECTED A FOCUSED SET OF
INITIATIVES



OPPORTUNITIES FOR IMPACT

*Initial
Observations*

OPPORTUNITIES FOR IMPACT

Underserved Population

COMMUNITY AND PROVIDER

ENGAGEMENT/EDUCATION AROUND PALLIATIVE CARE
AND ADVANCE CARE PLANNING (n=13)

Work through existing
organizations

OPPORTUNITIES FOR IMPACT

**DIRECTORY OF RESOURCES ACCESSIBLE TO
PATIENTS, FAMILY CAREGIVERS AND PROVIDERS
ACROSS SYSTEMS AND LOCATIONS (n=11)**

OPPORTUNITIES FOR IMPACT

PREPARE

Leverage EPIC now that most providers are on EPIC in the Bay Area

STANDARDS FOR ADVANCE CARE PLANNING DOCUMENTATION AND INFORMATION SHARING (n=9)

POLST Registry

We need one Advance Directive

OPPORTUNITIES FOR IMPACT

Generalist Palliative Care
Training

**PROMOTE PALLIATIVE CARE TRAINING FOR DIRECT
CARE AND FRONTLINE WORKERS EMPLOYED BY
SOCIAL SERVICES, HOME HEALTH AND HOME CARE
ORGANIZATIONS (n=8)**

ACP Training

OPPORTUNITIES FOR IMPACT

Standardization of names,
payments

San Francisco Policy (n=5)

Promote the business case
for palliative care

Referrals to palliative care

Criteria	Relative Importance	Option A	Option B	Option C
----------	---------------------	----------	----------	----------

CRITERIA

*Initial
Observations*

CRITERIA FOR INITIATIVE SELECTION

FEASIBILITY	IMPACT	SUSTAINABILITY	INCLUSIVENESS
Cost	Measurable	Availability of Ongoing Funding	
Level of Effort Required	Reach	Leverages Assets That Already Exist	
Availability of Implementation Funding	Alignment With Mission		
History of Success	Time to Impact/Early and Sustained Wins		
Leverages Workgroup Unique Value			

NEXT STEPS

